

# ANNUAL REPORT

2025-2026

## Our Vision

“Working together to enable everyone to live a life free from all forms of domestic abuse.”



**SETDAB**

Southend, Essex  
& Thurrock Domestic  
Abuse Board

# Contents

- Foreword from the SETDAB Chair ..... 3
- Who are we? ..... 4
- SETDAB Strategy 2020-2025..... 5
- Outcome 1** ..... 6
- Outcome 2** ..... 8
- Outcome 3** ..... 10
- Outcome 4** ..... 12
- Outcome 5** ..... 14
- SETDAB Strategy 2025-2030..... 20
  - Our new commitment leads ..... 21
  - Progress so far..... 22
- Priorities for coming year ..... 23
- Compass ..... 25



# Foreword from the SETDAB Chair



**Joel Charles**  
Deputy Police, Fire and Crime Commissioner  
(PFCC) for Essex

Every victim of domestic abuse (DA) should feel they can speak out and trust their voice will be heard. Feeling trapped and unable to escape an abusive relationship is a deeply traumatic experience. The cycle of abuse, often physical and psychological, leaves a victim isolated. I am struck by the courage of survivors of DA. Their stories are a powerful reminder of why there can never be any complacency about the scale and complexity of such abuse. The path a survivor takes to rebuild their life is fraught with emotional challenge as the full consequences of abuse surface.

The truth is that DA destroys lives, and it can happen to anyone regardless of age, social background, gender, religion, sexuality, or ethnicity. It is sadly often a shared experience, the victim's family and other loved ones all share in the toll it takes.

Partners continue to work together within the Pan Essex Domestic Abuse Commissioning Collaborative (PEDACC). From the start of the year, our DA single point of access was extended to meet the needs of all affected, including those seeking support for concerns about their own behaviour. Over the course of the year specialist DA commissioned services have been successful in securing additional safe accommodation, which can also meet the needs of male victims with their children and LGBTQ+ victims. This is a welcome step forward.

The Reflect campaign, driving perpetrators to seek help to change their behaviour, continues to reach a wide audience. A new phase of the campaign was launched in February 2026, including a video informed by people who have engaged with an intervention programme that aims to help them change their behaviour. The 'Look, Listen, Be Aware' campaign was also launched this year to help agencies and communities supporting older people to better recognise if people may be at risk of DA, and be able to signpost them into services.

Technology-facilitated DA acts as a tool for coercive control and was a key issue explored at the Southend, Essex and Thurrock Domestic

Abuse Board's (SETDAB's) 2025 annual conference. This is an area of work we all need to know more about, especially around its use in stalking and harassment. Perpetrators are using technology to isolate victims, restrict their independence and instil a constant sense of fear. The conference was a good opportunity to highlight the need to improve knowledge and understanding of how abusers misuse technology.

During the year, over 600 professionals attended the SETDAB lecture series, where the focus was on further educating practitioners and increasing their confidence in responding to DA and reaching under-represented groups.

SETDAB is a powerful partnership driven by the commitment and passion of the many organisations that make up the group. Over the years our DA response in Southend, Essex and Thurrock has evolved. Our recent focus has been on delivering impactful interventions and support, and there is recognition that more can be done to improve our work. This year has seen a number of pilots launched on new approaches including: DA specialists partnering with our local mental health trust; DA specialists working with a GP surgery and the development of additional housing options to support victims of DA to remain in their homes when it is safe to do so.

The launch of SETDAB's new 2025-30 Strategy was a standout moment in October 2025. Four commitments drive the focus of the Strategy, developed by partner agencies and shaped by people with lived experience. A delivery

plan was also put together to take forward the overarching ambition of the Strategy. SETDAB's mission is vital, everyone should be able to live free from domestic abuse. None of the positive work delivered by SETDAB can be achieved without strong partnerships, targeted community engagement, and a commitment to continuous improvement.

There has, of course, been a change in board leadership, the longstanding Chair, Jane Gardner, stood down in December 2025. Jane worked with board members to deliver further action, helped to raise awareness of the wider challenge and remains a champion of services for victims of DA. SETDAB is a much-strengthened partnership organisation thanks to Jane's contribution.

As the new Chair of SETDAB, I want to build on Jane's work and help to navigate the SETDAB partnership through what is turning out to be a significant period of change locally. The added value of SETDAB's partnership activity and its positive work supporting victims of DA is clear.

None of the work delivered over the last year could have been achieved without the efforts of individuals and organisational representatives who form a key part of SETDAB. Their collective experience, professional insight and invaluable support helped to best position the partnership. It is also important to thank the dedicated executive team at SETDAB who are working to implement the new Strategy and drive collaboration within the wider membership to tackle DA.

# Who are we?



- The Southend, Essex, and Thurrock Domestic Abuse Board (SETDAB) is made up of representatives from agencies and organisations working in partnership to facilitate our vision.
- The Board is responsible for designing and implementing the Domestic Abuse Strategy for Greater Essex.
- Our Strategy has been developed in partnership and provides strategic leadership to address domestic abuse, delivering on what really matters to people and partners.
- We deliver a co-ordinated approach to innovate, drive change, and address domestic abuse across SET.

# SETDAB Strategy 2020-2025

During 2025 we transitioned from working on our 2020-2025 Strategy to launching our [2025-2030 Strategy](#). As part of the work to develop our new Strategy we asked our partners to reflect from our 2020-2025 Strategy what they felt had been the partnership's greatest successes:

- Advocating and embedding a multi-agency approach to domestic abuse, e.g. Multi-Agency Risk Assessment Conferences.
- Joint commissioning of domestic abuse services.
- Working together to keep children safe.
- Delivering training and conferences.
- Developing pan-Essex resources.
- Building and sharing expertise, best practice and learning.
- Management of Domestic Abuse Related Death Reviews.
- Communication and campaigns.
- Clear signposting and promotion of services.

## OUTCOME 1

Children and young people can recognise and form healthy relationships

## OUTCOME 2

People experiencing and at risk of experiencing domestic abuse are supported to be and feel safe

## OUTCOME 3

Everyone can rebuild their lives and live free from domestic abuse

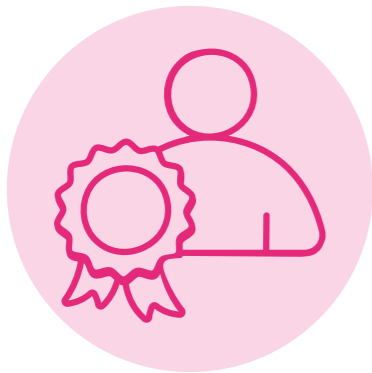
## OUTCOME 4

Supporting and disrupting perpetrators to change their behaviour and break the cycle of domestic abuse

## OUTCOME 5

Communities, professionals and employers are able to recognise domestic abuse at the earliest opportunity and have the confidence to take action

# Outcome 1: Children and young people can recognise and form healthy relationships



## Young People's Voices

For the SETDAB 2025 Conference Essex Youth Service worked with young people to develop and deliver a video that gave insights into their lives and how technology facilitated domestic abuse impacted them.

The video is a powerful voice from the lens of young people highlighting the complexities that they had to navigate.



## Children and young people can recognise and form healthy relationships

We continue to promote a consistent approach to delivering support to children and young people to help them in understanding healthy relationships.

In 2025-26, Risk Avert was delivered in 45 schools, and Goodman and Sisters in Strength received a total of 805 referrals and delivered 1,133 one-to-one sessions and 175 group sessions.



## Healthy Family Relationship (HFR)

The HFR programme combines the Reducing Parental Conflict (RPC) and Non-Violent Resistance (NVR) programmes to support the reduction of conflict in families and the development of healthy family relationships. Combining these programmes acknowledges that child to parent conflict and parent to parent conflict is interlinked and that it is only when both are addressed that outcomes are improved for the child(ren).

The HFR programme supports families to develop healthier family relationships, effectively deal with conflict and have the tools to improve their relational communication in the future.

In 2025-26 funding enabled voluntary, statutory and community sector providers to train 148 practitioners enabling delivery of a range of interventions including group programmes, peer support and targeted 1:1 support to families. Delivery to date has supported 151 parents.

## Risk Avert Programme



**74.8%**

of young people achieved positive outcomes relating to their mental well-being



**67.8%**

of young people achieved positive outcomes relating to their self-efficacy



**80.8%**

of young people achieved positive outcomes relating to their resilience

**RISK-AVERT**

A TTE and ECG product



### Goodman & Sisters in Strength Programmes

I learned about my boundaries, and it helped with my mindset.

Graduate, Sisters in Strength

I gained confidence in my relationships.

Graduate, Goodman

**YOUTH  
SERVICE**

Inspire  
Enable  
Achieve

## Outcome 2: People experiencing, or at risk of experiencing, domestic abuse are supported to be and feel safe



### **PEDACC (Pan Essex Domestic Abuse Commissioning Collaborative) Board**

Meets regularly to ensure our commissioned domestic abuse services offer consistent, high-quality support across SET.

From April 2025 onwards, it enhanced how people access support, with Compass as the central point of contact for all domestic abuse related enquiries (victim, perpetrator, public, family/friend and professional) ensuring a clear, consistent, and accessible pathway to support.



### **MARAC (Multi-Agency Risk Assessment Conference)**

Partners have worked together to safeguard

**2298**

**high-risk victims** of abuse, 114 more than the previous year.

From April 2025 onwards, we also aligned our MARAC audit processes across SET.



### **Additional funding**

SETDAB partners continued to secure almost

**£1m**

**of additional government grants**

for another year. This was used to increase services available to support victims of domestic abuse.



### **COMPASS engagement**

COMPASS (our front door into DA services) received

**15,965**

**calls during the year**, 1% more than last year. They also received 8,240 online referrals, 10% more than last year.



Domestic abuse services were quick to respond (to people who had experienced DA) when reaching out for help and referred them to other specialist services such as substance misuse when needed.

Lived experience views, SETDAB Strategy 2025-2030



(MARAC) encourages collaborative working and more opportunities for information sharing.

MARAC Partner feedback

# Outcome 3: Everyone can rebuild their lives and live free from domestic abuse



## Flexible funding

Essex Safe Start Fund allows us to support the needs of people requiring safe accommodation.

During 2025/26

**818**

**applications were approved** including support for security measures/target hardening, moving costs, mobile phones to allow safe contact with professionals/police and emergency accommodation.

This included support to 35 victims who had No Recourse to Public Fund's (NRPF).



## Whole Housing Approach (WHA)

The Housing Steering Group continues to provide support to all local housing authorities in SET, and through this extend their engagement with a growing number of other organisations to collaborate on good practice and innovation.



## Housing pilot

We launched a pilot which aims to improve victim-survivor housing options and choice through the development of perpetrator housing pathways. By creating a pathway for perpetrators we aim to prevent victim-survivors from homelessness.



## Expand Safe Accommodation

Provision of Safe Accommodation has been expanded across Southend, Essex and Thurrock to meet the diverse needs of victims-survivors, including accommodation for male victims with children.



This funding will help me and my children finally feel like they have a safe place to call home. I want to make this house a home for my children, I'm trying to rebuild our lives and would appreciate any support that would be given.

Essex Safe Start Fund



I really value this service. It has been an essential source of support for the families I work with, particularly those who need practical supplies during difficult times. The criteria is clear, and the process is straightforward - it's not weighed down by long forms or unnecessary documentation, which makes accessing support much easier for both workers and families.

Essex Safe Start Fund

# Outcome 4: Supporting and disrupting perpetrators to change their behaviour and break the cycle of domestic abuse



## Additional funding

Secured from the Home Office Perpetrator Fund for existing and new perpetrator projects.

Funded projects included:

- Stalking Intervention Service (and associated victim support)
  - Goodman and SiS early intervention support for young people at risk of unhealthy relationships
- Out of Court disposal project
- Communications and media work to deliver the #Reflect campaign.



## Our commissioned perpetrator services

PEDACC successfully procured SET-wide perpetrator services, with delivery starting from April 2025 onwards.

Cranstoun group programmes are now fully operational across SET.

**Cranstoun received**

**436**

**referrals**

for both perpetrator and victim-survivor support services.



## Stalking intervention

During 2025-6, our Specialist Intervention Service (stalking behaviour change),

**received**

**51**

**referrals.**

Of these, 19 were assessed as suitable to commence the programme and 16 have completed it so far.



## High-Harm High-Risk Cohort

Essex Police continue to disrupt the most high-risk domestic abuse offenders through their targeted work.



Working with the programme has helped me recognise the impact my behaviour had on my family and given me the tools to make positive changes. I am now free from gambling and alcohol, communicate better with my partner, and manage my anger in healthier ways. The support has helped me rebuild relationships and feel more positive about the future.

Service User, Cranstoun



Thank you for helping me recognise my self-worth and rebuild my confidence. Your compassion, patience, and support have changed my life, and for the first time I feel hopeful about my future.

Victim/survivor feedback, Cranstoun

# Outcome 5: Communities, Professionals and Employers are able to Recognise Domestic Abuse at the Earliest Opportunity and Have the Confidence to Take Action



## Website visitors

We continue to add information and resources to our SETDAB website, so we can support and raise awareness of all forms of domestic abuse along with improving learning.

We had  
**38,511**  
visitors to our website during the year; this is an increase of 79% compared to last year.



## SETDAB newsletter

Our newsletter provides subscribers with timely updates on domestic abuse insights, news and events, latest research, legal updates, and intervention strategies.

Since last year we have increased our subscribers by 11% to  
**1,209.**



## J9 training

The J9 initiative creates 'safe spaces' across public and customer-facing services and organisations, where frontline colleagues are uniquely placed to recognise the signs of domestic abuse and connect people to support.

J9 training builds confidence and skills to respond effectively. Delivered by Alpha Vesta CIC,  
**2,058**  
people have received training, with 50 accredited J9 safe spaces established across Essex.



## eLearning training

We are supporting practitioners to improve their response to DA by providing 6 e-learning packages, including the launch of our Stalking Basic Awareness package in April 2025.

Over  
**6,300**  
users have accessed our courses.



## LinkedIn

Our LinkedIn page, with a following of  
**935**  
reaches into our communities helping to engage, update and share the latest Domestic Abuse news, learning and training initiatives.

This year we have gained 142 new followers; our posts have received 35,021 impressions and 980 reactions.

# SETDAB Communications Activities

## It's Never Too Late Campaign

The NeverTooLate campaign supported statutory and voluntary partners to raise awareness of domestic abuse among older people.

**400+** downloads of campaign content and posters from the SETDAB website during the year.

## 16 Days of Activism

SETDAB coordinated partnership activity to raise awareness of technology-facilitated abuse. Included:

**18** in-person events with 400+ public contacts.

**24,900+** Nextdoor impressions

**3,200+** LinkedIn impressions

**250+** toolkit downloads,

**23.4%** increase in professional referrals to Compass.



## Stalking Campaign

Our campaign focused on digital and cyber stalking, highlighting the role of health and frontline professionals.

**2,800+** SETDAB website views in April 2025

**16k+** social media impressions.

### Beware of the 'Rejected Stalker'



## Behind the Smiles

Behind the Smiles campaign co-produced with lived-experience insight reached many people across Essex.

**110** toolkit downloads by partners

**40.6k** people reached across social media channels.



**58%** increase in Compass referrals compared to previous year.



## World Suicide Prevention Day

Targeted communications highlighted the links between domestic abuse and suicide, while promoting professional support and training. Activity achieved strong engagement, including:

- 14,984 impressions** and 40 engagements on Nextdoor
- 600 views** of professional resources
- 74 click-throughs** to suicide prevention support
- 62 clicks** to SETDAB professional suicide resources.

**Suicide is now the leading cause of death in domestic abuse cases.**



## #REFLECT Campaign

#REFLECT is our award-winning, perpetrator-focused domestic abuse prevention campaign. #REFLECT encourages people to recognise and change harmful behaviour, supported by multi-channel activity including social media, TV, radio and digital advertising.

The real-life 'James' case study generated widespread media coverage, directly leading to a self-referral. Campaign materials were also distributed to 210 GP surgeries.

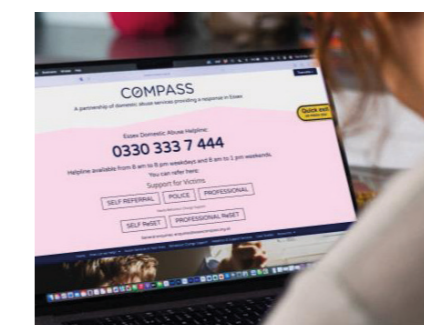
The campaign achieved:

- 80,000+** visits to Essex Compass Reflect pages
- 506,000+** people reached
- 752,000+** social media impressions
- 1.5 million** Meta impressions
- 75,000+** link clicks
- 581,000+** YouTube views
- 18** requests for contact and 13 direct self-referrals into behaviour-change support.

**#REFLECT**  
ON YOUR BEHAVIOUR

## Look. Listen. Be Aware

This campaign encourages communities, professionals and families to recognise the signs, start conversations and connect older people to support.

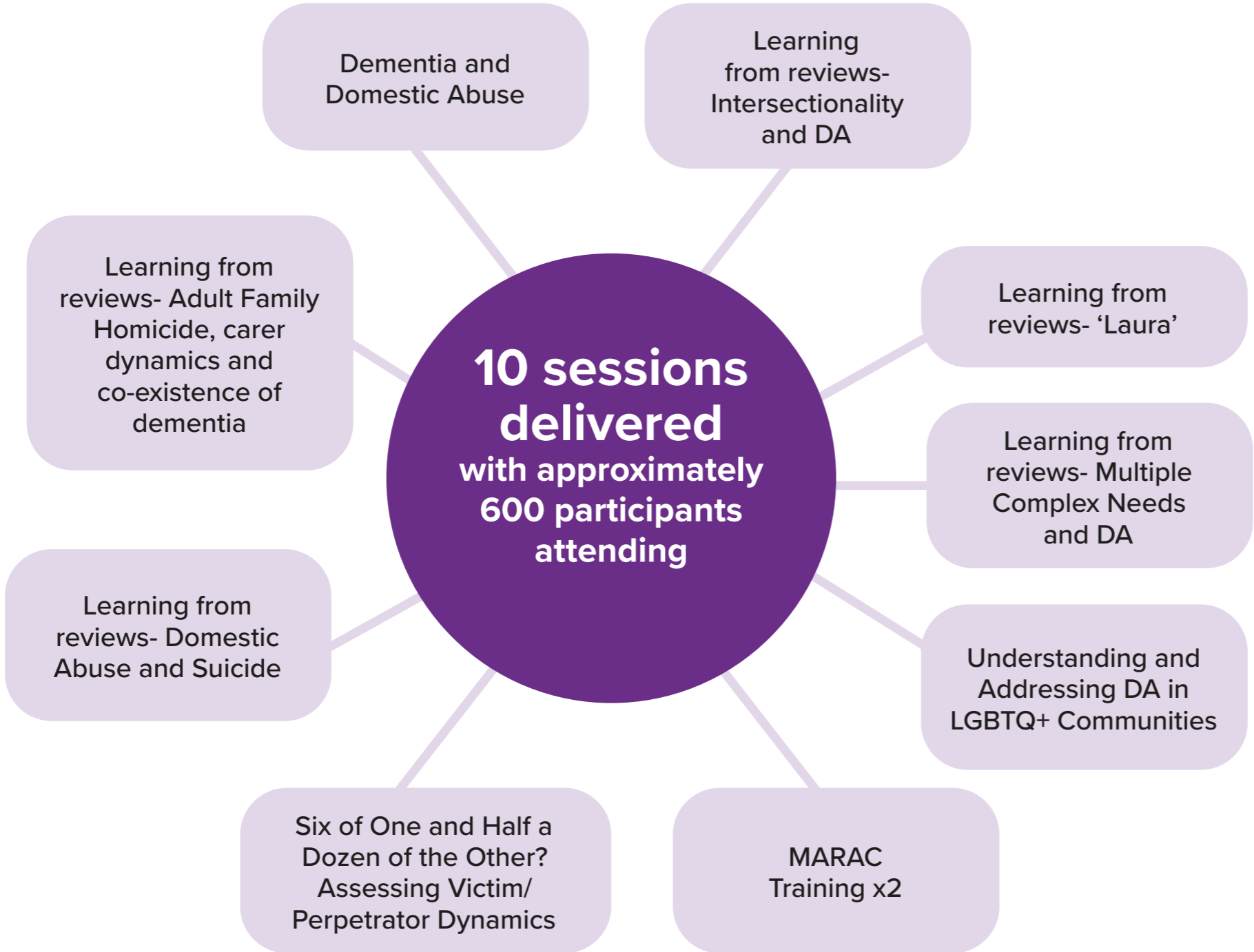


The campaign achieved:

- 51** toolkit downloads by partners
- 68** clicks to campaign landing pages
- 289** unique clicks from newsletter coverage
- 14,000** new users to the COMPASS website
- Engagement across all campaign pages over four months against average page views were:
  - About COMPASS** - 8.5% increase
  - How can we help?** - 62% increase
  - Find a victim service in your area** - 32% increase
  - Case studies** - 183% increase
  - Domestic abuse in later life (SETDAB)** - 91% increase

# SETDAB Lecture Series

Helping to enhance professional response to domestic abuse with focused learning on key topics



“ Thank you so much, this was very informative and will be sharing the information and attending more sessions. This training is essential for Safeguarding Caseworkers like me, excellent. Massively helpful, especially the suicide timeline. ”

**100% of attendees to our lectures have said the learning would have a positive impact on their working practice.**

# SETDAB Conference 2025

**In November, we welcomed 220 delegates to our annual SETDAB conference, uniting professionals from across Essex who are dedicated to addressing domestic abuse. This year's event focused on technology facilitated domestic abuse.**

The timing of our conference leads into the United Nations 16 Days of Activism Against Gender-based Violence, a global movement to end violence against women and girls. There were attendees from a range of statutory and voluntary agencies.

Our annual conference provides an opportunity to bring people together to build connections and strengthen partnership working, increasing our response to domestic abuse along with driving change.



It was genuinely a pleasure to attend the Essex SETDAB Conference, and it means a great deal to me to have delivered the keynote. Being given the space, time and platform to contribute in a way that might make a difference is exactly what matters most to me. Essex appears to be in a strong place because of the work SETDAB does, and I was truly impressed by the depth of expertise, commitment and sense of community across the sector — it is remarkable.

Dr Leonie Tanczer



I cannot thank you enough for yesterday and for allowing young people's voices to be heard at such a huge event.

Attendee



It was such invaluable learning from a brilliant line up of speakers, and a great opportunity to meet the other service providers in the partnership. Thank you.

Attendee



Thank you so much for the opportunity and allowing my voice to be heard. It was an honour and a privilege and felt like a really safe space to share. I will never ever forget yesterday and would absolutely do it again in a heartbeat.

Lived experience speaker

**Post-conference 100% of attendees have knowledge and understanding of the best practice for identifying and addressing risks of technology facilitated abuse. With 19% having excellent knowledge and understanding, and 77% having good knowledge.**

# Domestic Abuse Related Death Reviews (DARDRs)

## Learning the lessons



Since 2017 SETDAB has managed the DARDR work on behalf of our Community Safety Partnerships (CSPs).



In June we shared our 4th Thematic Review with our partners to highlight learning from recently published DARDRs. The learning identified is used to inform the work of SETDAB.



We delivered a series of 4 online learning events to share good practice and learning with professionals and 1 in person workshop.



3 new DARDRs have been commissioned for 2025/26 alongside our ongoing reviews, and 6 reviews were completed/published.



Work was completed to identify emerging themes which helped to shape our Communications Strategy as well as other key projects.



SETDAB continued to participate in a Local Oversight Pilot with the Domestic Abuse Commissioner's Office which informed the development of the Learning from Loss Report, which focused on the implementation of recommendations, actions and sharing of learning on completed DARDRs.

[Find out more about our published reviews.](#)

# SETDAB Strategy 2025-2030

## Our Strategy Development Process

During 2024/25, SETDAB held a number of workshops with our Board members to develop our key commitments as well as hosting an online partnership consultation.

During April and May 2025, we held two further workshops with our key partnership agencies to inform the development of the key priorities and actions. In May and June 2025, we also held workshops and interviews with people who have lived experience of domestic abuse to seek their voices and involvement in shaping our priorities and actions.

A final public facing consultation ran for six weeks during August and September 2025. The consultation webpage was visited 240 times. All feedback was reviewed to inform the final Strategy which we launched in October 2025.



We will improve our multi-agency systems and process that underpin partners' response to domestic abuse.



We will work with our local communities to understand their needs to ensure that they receive the support they need, when and where they need it.



We will work together to promote healthy relationships by ensuring children and adults can access information and guidance at the earliest opportunity.



We will all work together to ensure we fulfil our duties as set out in the Domestic Abuse Act (2021) Statutory Guidance.

# We have appointed our new Commitment Leads



## Commitment 1

**Greg Myddelton**

Strategic Head of Partnerships and Delivery, PFCC for Essex

### Why is this important to me?

This commitment reflects my aspiration for those affected by domestic abuse to experience a consistent and compassionate response, rather than feeling alone or passed between services. By strengthening partnership working and embedding trauma-informed, whole-family support, we can ensure people access the right help earlier and more easily, which is key to protecting victims and breaking the cycle of abuse.



## Commitment 2

**Dr. Katrina Wickes**

Domestic Abuse Strategy and Commissioning Manager, Southend-on-Sea City Council

### Why is this important to me?

This commitment reflects my belief that effective domestic abuse services must be shaped by lived experience, responsive to local need, and designed to reduce barriers to support, particularly for those who are less likely to be heard or seen by traditional systems. Working with communities to understand what support is needed is essential if our Strategy is to be meaningful rather than theoretical.



## Commitment 3

**Clare Burrell**

Head of Strategic Commissioning and Policy (Children & Families), Essex County Council

**Ben Hughes**

Head of Wellbeing and Public Health (Marginalised Communities), Essex County Council

### Why is this important to us?

This commitment is important to us as it clearly reflects the need to focus on ensuring we are delivering an evidence-based and universal approach to education, prevention and early intervention with regard to healthy relationships. It identifies and prioritises the need to engage with children and young people at the earliest opportunity and adults and communities, to ensure we are reducing risks and preventing harm.



## Commitment 4

**Paul Gayler**

Strategic Housing Services Manager, Chelmsford City Council

### Why is this important to me?

Domestic abuse has been one of the main causes of homelessness throughout my working career and it is evident that no single agency or organisation can resolve this problem by working in isolation. The Domestic Abuse Act recognises this and created a framework which relies on organisations working together, SETDAB has shown since its establishment the essential role it plays in making this actually happen.

# Progress October 2025-March 2026

We continued to deliver on the outcomes from the 2020-2025 Strategy for the whole of the year whilst also transitioning into delivering work on our new commitments. Work that has commenced under the new Strategy includes:

## Commitment 1

The development of a multi-agency Champion Network supports our SETDAB Strategy 2025-2030, which prioritises strengthening multi-agency systems and improving how partners work together to respond to domestic abuse. We have a Multi-Agency DA Champion Network development workshop planned for May 2026.

A multi-agency learning event on DARDs involving suicide was delivered in January 2026. 100% said the learning from this briefing would have a positive impact on their working practice. Professional Resource Page created on the links between DA & Suicide.

Whole Family Early Help for Domestic Abuse Innovation Project developed, led by ECC to build on the Coordinated Community Response reach.

## Commitment 2

Launched in November 2025 our 16 Days of Activism demonstrated strong engagement. The #REFLECT perpetrator-focused campaign continues to expand, driving behaviour-change. The Look. Listen. Be aware. Campaign was delivered to raise awareness of domestic abuse in later life.

In February 2026 we agreed our SETDAB Communication Strategy, setting out agency responsibilities in publicising clear pathways into COMPASS.

We continue to expand our reach into SET-wide communities and groups, including customer facing businesses and organisations through J9 online training where participants learn how to recognise, respond and refer anyone who may be experiencing domestic abuse.

## Commitment 3

We have established a working group with other Partnership Board representatives to consider how we can all work together to continue to embed healthy relationship work in schools in a more co-ordinated way.

We are developing a partnership event, to be held in June 2026, bringing together both C&YP Services and Adult Services to design a whole family workstream and set our priorities for the next year.

Continued to expand the reach of the SETDAB network of agencies that can provide early intervention opportunities to C&YP and Adults by attracting new partners such as Active Essex, Red Cross, Foodbanks, PEGS.

## Commitment 4

Our three MARAC Managers delivered a SETDAB seminar to 85 professionals to help them recognise high-risk domestic abuse, feel more confident when completing a risk assessment and understand how to complete a high-risk referral to MARAC. 100% said the session would have a positive impact on their working practice.

We started taking referrals into our ReSET Housing Pilot Project, an intervention for people causing harm in their families, to prevent continued abuse. It provides behaviour change support to the person causing harm, alongside support to the victim-survivor.

We continued to share learning from our local Domestic Abuse Related Death Reviews by delivering four online sessions and one in person event to a total of 233 professionals across SET.

# Delivery of our SETDAB Strategy

## Our priorities for the coming year

- 1** Continue to create opportunities, across different methods, to engage with people with lived experience to influence the work of SETDAB.
- 2** Continue to work with PEDACC to develop further opportunities to expand the reach of our DA services.
- 3** Develop and establish a SETDAB DA Champions Network.
- 4** Develop a whole health approach to responding to DA across SET.
- 5** Work with our partners to identify key themes to inform the development and delivery of high-quality learning events.
- 6** Release domestic abuse communication and campaign activities across the year to continue to raise awareness of domestic abuse and pathways into services.
- 7** Continue to manage the DARDR work across SET and share learning with our partners.

# Glossary

**CIC** – Community Interest Company

**CSC** - Children’s Social Care

**CSP** - Community Safety Partnerships

**C&YP** – Children and Young People

**DA** - Domestic Abuse

**DARDR** – Domestic Abuse Related Death Review

**ESIP** – Essex Stalking Intervention Panel

**FGM** – Female Genital Mutilation

**ICB** – Integrated Care Board

**IDVA** – Independent Domestic Violence Advisor

**Impressions** – number of times social media post features on a user’s feed/ timeline

**ISVA** – Independent Sexual Abuse Advisor

**LGBTQ+** – Lesbian, Gay, Bisexual, Transgender, Questioning

**Lived Experience** – first-hand, personal knowledge and understanding from experiencing domestic abuse

**MARAC** – Multi-Agency Risk Assessment Conference

**PEDACC** – Pan Essex Domestic Abuse Commissioning Collaborative

**PFCC** – Police, Fire and Crime Commissioner

**Reactions** – interacted with social media post

**SET** – Southend, Essex, and Thurrock

**SETDAB** – Southend, Essex, and Thurrock Domestic Abuse Board


Not sure where to go if you or someone you know is experiencing domestic abuse?

# COMPASS

Call COMPASS for confidential help, support and advice


**Essex Domestic Abuse Helpline**  
**0330 333 7 444**

 Supporting all of Essex

 Working with local services to get you the right support

 Self-referral

 Professional referrals

 Support provided for anyone over the age of 16 in Essex



Call us  
**0330 333 7 444\***  
\*In an emergency dial 999

Refer online at  
[www.essexcompass.org.uk](http://www.essexcompass.org.uk)

In partnership with:



Funded by:



Delivered by:



For a brighter future, free from abuse.

## Essex COMPASS

COMPASS is a single point of access across Southend, Essex and Thurrock to support victims of domestic abuse and people who want to change their harmful behaviour.

Essex Domestic Abuse Helpline:  
**0330 333 7 444**

Helpline available from  
**8am to 8pm weekdays**  
**and 8am to 1pm weekends.**