

An illustration showing several hands of different skin tones (brown, tan, yellow, orange) reaching up to hold large, colorful puzzle pieces. The puzzle pieces are in shades of blue, red, purple, green, and yellow. The background is a light purple gradient. The entire graphic is partially framed by a large, dark purple shape on the left side of the page.

ANNUAL REPORT 2024-2025

Our Vision

“Working together to enable everyone to live a life free from all forms of domestic abuse.”

SETDAB

Southend, Essex
& Thurrock Domestic
Abuse Board

Foreword from the SETDAB Chair



Jane Gardner
SETDAB Chair and Deputy Police, Fire and
Crime Commissioner for Essex

This year, SETDAB continued its mission to ensure that everyone across Southend, Essex, and Thurrock (SET) can live free from domestic abuse. Our work remains rooted in strong partnerships, community engagement, and a commitment to continuous improvement.

Domestic abuse (DA) destroys lives, and it can happen to anyone regardless of age, social background, gender, religion, sexuality, or ethnicity. When someone experiences domestic abuse, it impacts everyone around them—their children, their loved ones, their whole family.

Together we are working incredibly hard to tackle DA across our county. In the past year we continued to develop collaborative initiatives that are doing more to identify, support and protect victims.

We continue to fund additional Independent Domestic Violence Advisors (IDVAs), Independent Sexual Violence Advisors (ISVAs), and Independent Stalking Advocacy Caseworkers (ISACs). These dedicated professionals are essential in providing the specialised support that victims need and are at the heart of our broader strategy to protect victims and prevent domestic abuse in our community.

We have been able to provide more funding for services such as the J9 initiative, designed to create safe spaces across the community enabling people to recognise, respond and refer anyone who may be experiencing domestic abuse at the earliest opportunity.

During 2024 we launched our “It’s Never Too Late” campaign, bringing attention to

the unique challenges faced by older adults experiencing domestic abuse. Coinciding with World Elder Abuse Awareness Day, this campaign raised awareness of domestic abuse affecting older people and encouraging conversations. By starting these important conversations and providing accessible resources, we can support older victims across Greater Essex in reclaiming their lives free from harm and fear and ensure that older people can live with the dignity and respect they deserve.

We also continue with our hugely successful “#REFLECT” campaign, driving perpetrators to seek help to change their behaviour. Launched in August 2022 on behalf of SETDAB, our perpetrator-focused domestic abuse campaign has grown significantly, helping victims by encouraging perpetrators to change their abusive behaviours.

Our 2024 SETDAB annual conference explored the connection between domestic abuse and suicide. As a result, SETDAB and the Suicide Prevention Board are now working closely together to improve support and prevent harm.

Over the years domestic abuse services in SET have evolved. SETDAB is a powerful partnership driven by the commitment and passion of the many organisations that make up the group. While we are delivering impactful interventions and support, we

know there is more we can do to improve the services we provide. Following a robust procurement and governance processes, Essex County Council, Southend-on-Sea City Council, Thurrock Council and the Police, Fire and Crime Commissioner (PFCC) successfully jointly commissioned domestic abuse services to ensure consistent and high-quality support across the whole of Greater Essex.

Earlier this year, we came together with a shared purpose – to shape a new strategy that secures the long-term sustainability and impact of the SETDAB partnership. This strategy not only builds on our collective achievements but also addresses emerging challenges, ensuring we remain responsive to the needs of all those affected by domestic abuse.

As Chair, I want to express my gratitude to every individual and organisation who contributed to this important work. Your time, insight, and commitment have been invaluable. I am especially thankful to those with lived experience who generously shared their perspectives.

To our dedicated team, our wider membership, and all our partners – thank you for your continued support, collaboration, and belief in the power of working together to make a lasting difference.

Contents

Who are we? 4

Our key outcomes 5

Outcome 1 **7**

Outcome 2 **11**

Outcome 3 **15**

Outcome 4 **19**

Outcome 5 **25**

Our priorities for the coming year..... **31**

Glossary **32**

Compass details **33**



Who are we?



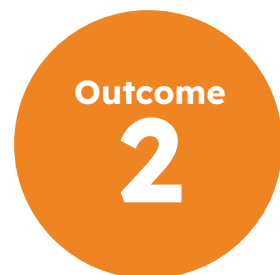
- The Southend, Essex, and Thurrock Domestic Abuse Board (SETDAB) is made up of representatives from agencies and organisations working in partnership to facilitate our vision.
- The Board is responsible for designing and implementing the Domestic Abuse Strategy for Greater Essex.
- [Our strategy 2020-2025](#) has been developed in partnership and provides strategic leadership to address domestic abuse, delivering on what really matters to people and partners.
- We deliver a co-ordinated approach to innovate, drive change, and address domestic abuse across SET.

Key outcomes

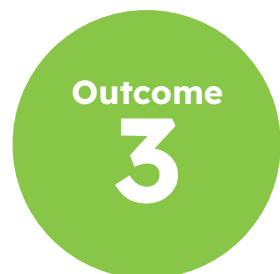
Our strategy focuses on five key outcomes:



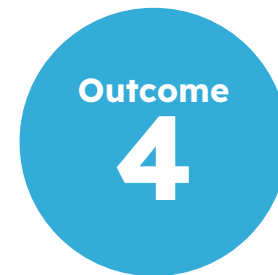
Children and young people can recognise and form healthy relationships



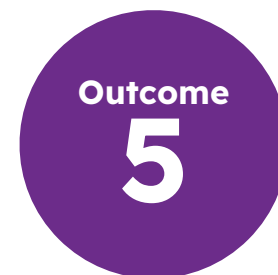
People experiencing and at risk of experiencing domestic abuse are supported to be and feel safe



Everyone can rebuild their lives and live free from domestic abuse

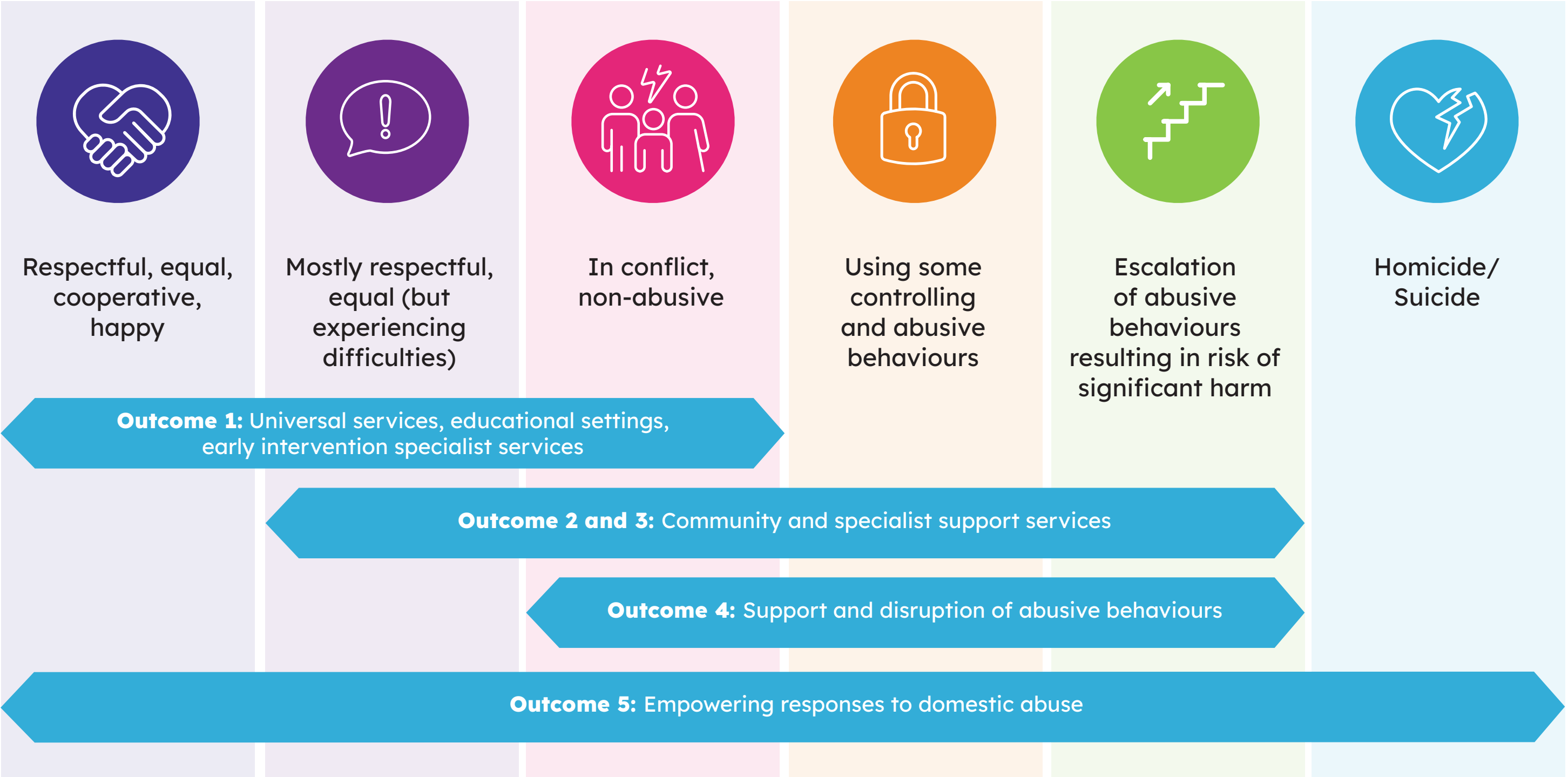


Supporting and disrupting perpetrators to change their behaviour and break the cycle of domestic abuse



Communities, professionals and employers are able to recognise domestic abuse at the earliest opportunity and have the confidence to take action

Our outcomes aim to address the needs of our local communities and those in need of support



A photograph of four diverse children (two boys and two girls) smiling and hugging each other outdoors. The background is a bright, sunny outdoor setting with green foliage. The children are wearing colorful clothing: a yellow shirt, a red shirt, a blue shirt, and a dark blue shirt. The image is partially obscured by a large pink diagonal shape that covers the left side of the page.

OUTCOME 1

Children and young people can recognise and form healthy relationships

Our Key Achievements – Outcome 1



Young People Ambassadors

We ensure young people ambassadors are embedded within services across the children and family system.



Children and young people can recognise and form healthy relationships

We continue to promote a consistent approach to delivering support to children and young people to help them in understanding healthy relationships.

In 2024-25, Risk Avert was delivered in 51 schools, and Goodman and Sisters in Strength received a total of 475 referrals and delivered 1,110 one-to-one sessions and 213 group sessions.



Reducing parental conflict

We provide support to parents to manage stresses and disagreements, and to understand patterns of behaviour. Developing tools and techniques that improve their parenting skills, as well as modelling positive conflict resolution to their children.

In 2024-25, 1,163 families engaged with support sessions and accessed information, advice and guidance to help them to manage conflict in their relationships.



Specialist targeted DA support

We commissioned additional support services for children and young people impacted by domestic abuse, such as, counselling, children and teenage recovery work, 1:1 crisis support, and parenting support programmes for non-abusive parents to understand how DA affects them as a parent and how it affects their children.

Children and young people can recognise and form healthy relationships

Risk Avert Programme



74.8%

of young people achieved positive outcomes relating to their mental well-being



67.8%

of young people achieved positive outcomes relating to their self-efficacy



80.8%

of young people achieved positive outcomes relating to their resilience

RISK-AVERT

A TTE and EGC product

Goodman & Sisters in Strength Programmes

It has helped me to get a better understanding of what a bad relationship looks like.

Graduate, Sisters in Strength

It has helped me with my mental health because I now feel more in control, especially of my anger.”

Graduate, Goodman

**YOUTH
SERVICE**

Inspire
Enable
Achieve

Reducing Parental Conflict Programme

I have never had the opportunity to reflect on how I was behaving and the impact this has on all of us especially the kids. The sessions have taught me a lot.

Parent, Reducing Parental Conflict course

Outcome 1 Lead



Clare Burrell - Head of Strategic Commissioning and Policy, (Children & Families) Essex County Council

“Our early intervention and prevention work is critical to ensuring we raise awareness about healthy relationships so that young people and adults are empowered to build connections rooted in respect and understanding, fostering positive emotional well-being and reducing the prevalence of abuse.”



OUTCOME 2

People experiencing
and at risk of
experiencing domestic
abuse are supported
to be and feel safe

Our Key Achievements – Outcome 2



PEDACC (Pan Essex Domestic Abuse Commissioning Collaborative) Board

PEDACC was established and successfully commissioned domestic abuse services to ensure consistent, high-quality support across Southend, Essex, and Thurrock, with delivery beginning in 2025.



MARAC (Multi Agency Risk Assessment Conference)

Partners have worked to **safeguard 2,184 high-risk victims** of domestic abuse this year, with every case heard within the 14-day protocol.



Professional Barriers

A good practice guide was developed to support employers and their employees working in the DA arena who may be victims of domestic abuse themselves. This was developed in response to the unique barriers faced by people working in the DA sector to seek help.

In the first 7 weeks of being available, the web page had more than 300 views and almost 100 downloads.



Additional funding

SETDAB partners have secured almost **£1m** of additional annual government grants. This will increase services available to support victims of domestic abuse.



COMPASS engagement

COMPASS (our front door into DA services) received **15,831 calls during the year**, 26% more than last year. They also received 7,472 online referrals, 44% more than last year.

People experiencing and at risk of experiencing domestic abuse are supported to be and feel safe



Thank you so much for listening, you have really brought me back down to a calmer place than I was starting this call. I'm really grateful for you talking me through this because I was so scared to reach out.

Service User, COMPASS



I could not have done it without you (IDVA). I was going to withdraw the case several times, I didn't want to go to court, but you reassured me, so I did it, I went to court and got justice. I am so further forward thanks to you.

Service User, Next Chapter



The case was heard at MARAC and Essex Stalking Intervention Panel (ESIP) which allowed vital sharing of information. The result of all of this was that the perpetrator was recalled to prison. I feel that without such positive collaboration and information sharing (at MARAC), this outcome would not have occurred.

MARAC Partner

Outcome 2 Lead



Greg Myddelton - Strategic Head of Partnerships and Delivery, Police, Fire and Crime Commissioner for Essex

“By championing our new whole system approach to domestic abuse, commissioners and SETDAB partners are driving real change; ensuring victims receive timely, high-quality support and the tools to rebuild their lives. Together, the PFCC & SETDAB remain steadfast in our commitment to help victims and survivors of domestic abuse to recover and thrive.”



OUTCOME 3

Everyone can
rebuild their lives
and live free from
domestic abuse

Our Key Achievements – Outcome 3



Flexible funding

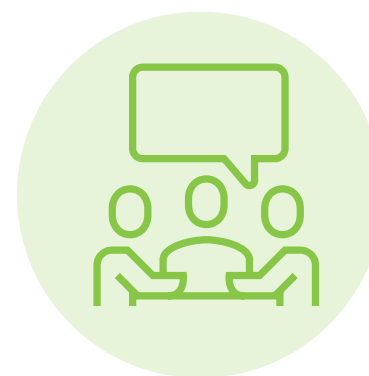
Flexible funding allows us to support the needs of people requiring safe accommodation.

From October 2023 to March 2025, 541 victims were supported to remain in their own home, 492 supported with security measures and 60 supported with emergency travel through this scheme.



Whole Housing Approach (WHA)

The Housing Steering Group continues to provide support to all local housing authorities in SET, and through this extend their engagement with a growing number of other organisations to collaborate on good practice and innovation.



Housing pilot

Development of a pilot which aims to improve victim-survivor housing options and choice through the development of perpetrator housing pathways. By creating a pathway for perpetrators, we aim to prevent victim-survivors from homelessness.



SETDAB lecture on housing

Increased awareness of housing approaches to domestic abuse and of the importance of homelessness prevention.

100% of attendees said the learning from this lecture would have a positive impact on their working practice.

**Everyone can
rebuild their lives
and live free from
domestic abuse**



Thank you for your kindness, understanding, support, knowledge, calm, clarity. I couldn't have done it without you...for listening, for caring and responding to our needs...to ensure that we are comfortable in a safe environment. The handling of this homelessness case has genuinely been amazing... I'm really happy to know that there's specialised support available for homeless people who have experienced domestic abuse, it's really wonderful and rare to see best practice being delivered in the way it has so far. The DA Support Specialist has been such an inspiration to me... by listening and helping me to see things in a new light, she has provided me with lots of information and groups and helplines... to help me see life can be good again... to make you feel human again after such a horrible ordeal. Thank you for the time and support you are giving me to help me feel positive and move forward with my life, I know I still have a long journey ahead, but it helps to feel supported to do so.

Service User, Epping Local Authority Housing Team Feedback



Thank you for a realistic account of the housing situation and the complex landscape that exists.

Attendee of the SETDAB Housing Lecture

Outcome 3 Lead



Paul Gayler - Strategic Housing Services Manager, Chelmsford City Council

“We cannot ignore the impact the housing crisis in Essex is having on all those in housing need, including those who are at risk of homelessness due to domestic abuse. The challenge this brings has led us to look long and hard at how existing systems need to be adapted and innovation encouraged. The Domestic Abuse Act sets out a framework for a wide range of organisations to work together to identify and support those at risk and we have seen a growing number of cases being helped as a result. We are now also seeing how, despite these challenges, partnership working is at least mitigating the impact of the housing crisis and at best creating a whole-system approach to prevent as well as resolve the risk of homelessness in this sector.”

OUTCOME 4

Supporting and disrupting perpetrators to change their behaviour and break the cycle of domestic abuse



Our Key Achievements – Outcome 4



Additional funding

Additional funding secured from the Home Office Perpetrator Fund for existing and new perpetrator projects.



Evaluation

Independent evaluation was completed of our suite of perpetrator interventions.



Our future perpetrator services

PEDACC successfully procured SET-wide perpetrator services, with delivery starting from April 2025 onwards.



Stalking intervention

During the year, our Specialist Intervention Service (stalking behaviour change) delivered by The Change Project, received 51 referrals. An increase of 364% compared to the previous year.



High-Harm High-Risk Cohort

Essex Police continue to disrupt the most high-risk domestic abuse offenders through their targeted work.

Supporting and disrupting perpetrators to change their behaviour and break the cycle of domestic abuse

Case study of an individual who was both a Specialist Intervention Service client and High-Harm High-Risk nominal.

In the nine months before beginning the stalking behaviour change intervention, Dan* had been arrested for 9 domestic abuse related offences.

During the nine months the client began working with the service, he had no further arrests.

*This is a pseudonym



The service is brilliant. It betters people's lives by showing them the right way to behave.

Service User, The Change Hub



I knew I needed to make changes in my head, but doing this course made it clearer of the changes I needed to do. I didn't know what I was expecting when I started. It was better than I thought it would be.

Service User, The Change Hub

Outcome 4 Lead



Ben Hughes - Head of Wellbeing & Public Health (Marginalised Communities), Essex County Council

Tackling the issues relating to possible future and current perpetrators of domestic abuse is key to an overall approach designed to reduce incidents and protect victims by changing and challenging ill-informed and dangerous attitudes and behaviours, preventing first time incidents and reducing the risk of harm to victims. Without a focus on perpetrators, we will only ever be dealing with the sad consequences of these behaviours.



OUTCOME 5

Communities, professionals and employers are able to recognise domestic abuse at the earliest opportunity and have the confidence to take action

Our Key Achievements – Outcome 5



Website visitors

We continue to add information and resources to our SET DA website, so we can support and raise awareness of all forms of domestic abuse along with improving learning.

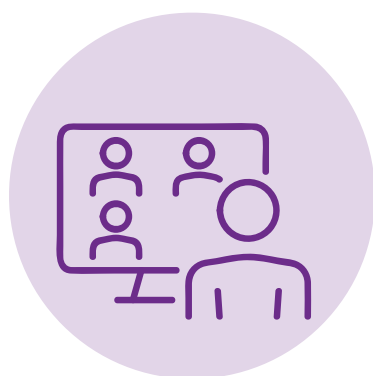
We have an average of 5,368 visitors to our website per quarter; this is an increase of 19% compared to last year.



SETDAB newsletter

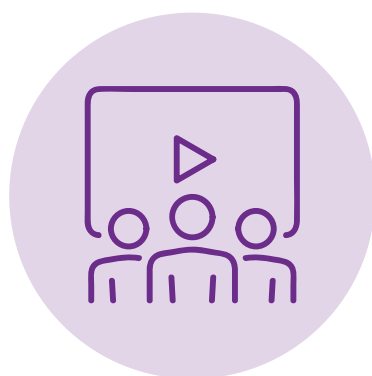
Our newsletter provides subscribers with timely updates on domestic abuse insights, news and events, latest research, legal updates, and intervention strategies.

From last year we have increased our subscribers by 13% to 1,089.



J9 training

has been delivered by Alpha Vesta CIC to **2,632** individuals in local communities and workplaces. J9 training supports attendees to build their confidence and skills in recognising the signs of DA at the earliest opportunity.



eLearning training

We are supporting practitioners to improve their response to DA by providing 5 eLearning packages focused on key areas including, LGBTQ+ relationships, substance misuse and older people.

Over 5,802 users have accessed our courses, a 16% increase from the previous year.



LinkedIn

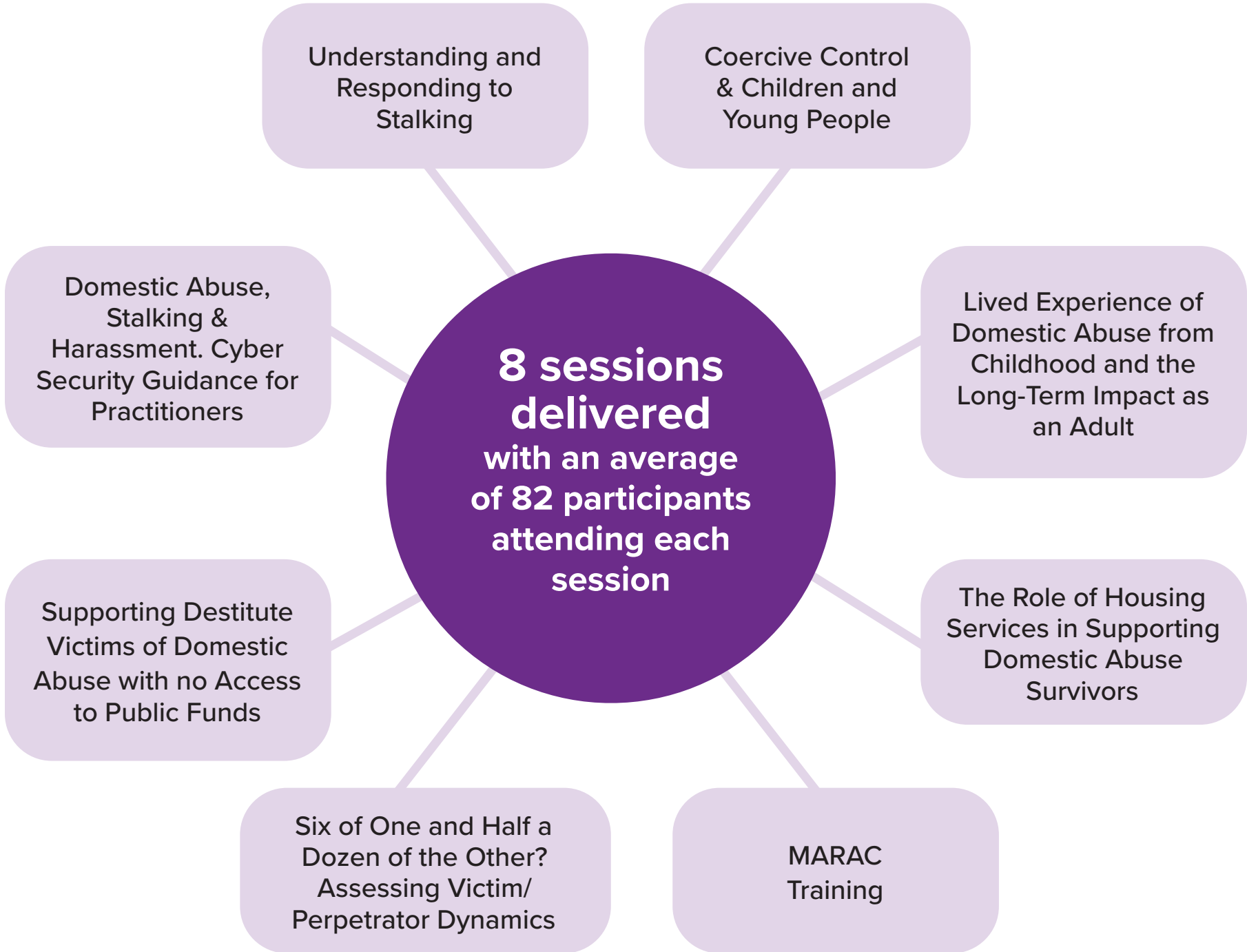
Since launching our LinkedIn page last year, we have gained **739** followers.

Our posts have had 34,916 impressions and 988 reactions.

Communities, professionals and employers are able to recognise domestic abuse at the earliest opportunity and have the confidence to take action

SETDAB Lecture Series

Helping to enhance professional response to domestic abuse with focused learning on key topics



“
Thank you for this, it has been so informative... I feel that I can question professionals who do not see the danger and risks of stalking.

Thank you so much that was veryinformative and helpful to look at how to write about the coercion without victim-blaming.

100% of attendees to our lectures have said the learning would have a positive impact on their working practice.

SETDAB Communications Activities

It's Never Too Late Campaign

Launch of the [‘It’s Never Too Late’](#) campaign focused on raising awareness of domestic abuse affecting older people, encouraging conversations and helping victims seek help. It uses content and visuals adapted from the ‘Hidden Harms’ animation, co-created by domestic abuse survivors aged between 60 and 93-years-old from Dewis Choice. Posters and social media content were made available for partners to share.

1050 link clicks to further information from SETDAB LinkedIn Channel.

470 downloads of the media pack and posters.



Stalking Campaign

“if you see the signs, we’ll see the bigger picture”

The updated [Stalking Campaign](#) includes extra content to cover [digital stalking](#), infiltrations of SMART technologies and online dating. Case studies were made available on SETDAB website to aid understanding.



26% increase in calls to Compass during May.

333 downloads of media pack.

325 link clicks to further information from our LinkedIn channel.



Euros 2024 Campaign

Raising awareness of the increased occurrence of domestic abuse and support available.



210 visits to the Euros – [Not Everyone is Cheering](#) webpage created to include signs of DA, getting help, statistical information and using Clare’s Law.

1301 social media impressions with 52 clicks through to more information on our LinkedIn Channel.

Posts on the SETDAB NextDoor Channel created **42,699 impressions** and 64 reactions.



Clare's Law

Raising awareness of what [Clare's Law](#) is and how to request a disclosure.

940 views of Clare's Law SETDAB webpage.

76 downloads of the poster.



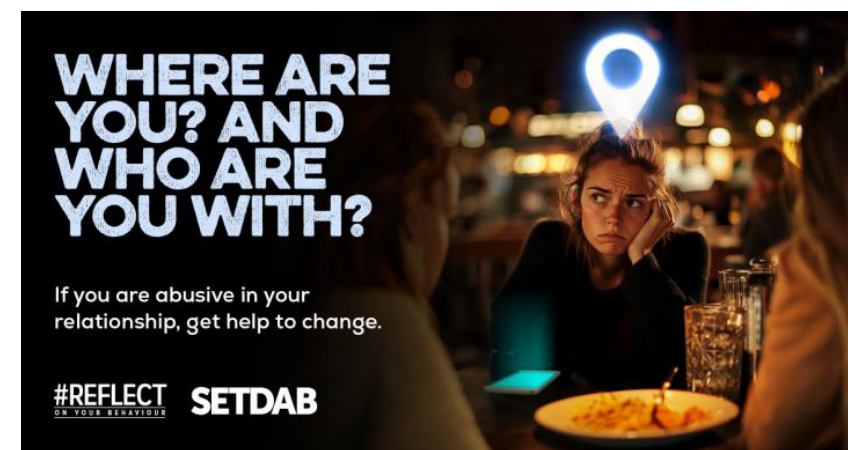
#REFLECT Campaign

The #REFLECT campaign continues to target perpetrators. Phase three of the campaign was launched on the 9 December 2024, with a mixture of online and physical resources.

The Change Project saw a 98% increase in website traffic from Facebook in December compared to November, correlating with the launch of the campaign.

Two targeted Facebook adverts were run over the Christmas period, each using the key video content.

Both delivered and generated over **8,000 clicks** through to The Change Project website.



16 Days of Activism

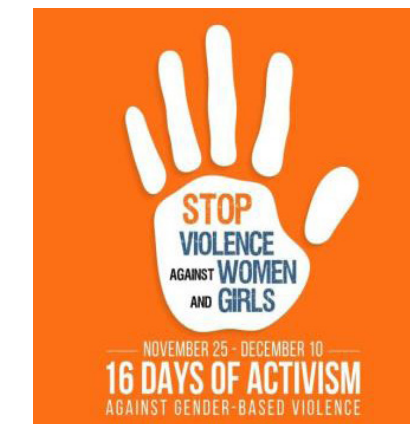
During the 16 Days of Activism, a wide range of events across Essex engaged communities, raised awareness, and provided support through various local initiatives.

17 training events with 417 attendees.

6 information stalls across the county from different partners with 800 contacts made.

39,292 impressions and 2,669 engagements from the social media posts partners shared to raise awareness and support for domestic abuse.

17% increase in referrals to COMPASS.



White Ribbon Accreditation

Many partners have achieved White Ribbon Accreditation demonstrating their commitment to ending violence against women and girls, working towards creating a safer environment for women and girls in the workplace and community.



Valentine's Day

Over Valentine's Day we shared communications focusing on [love bombing](#) and unhealthy relationships.

Traffic to the SETDAB website increased.

The love bombing blog post on SETDAB's NextDoor Channel had:

177 views,

18,866 impressions
and 26 reactions.



SETDAB Conference 2024

Exploring the relationship between domestic abuse and suicide

In November, we welcomed over 200 delegates to our annual SETDAB conference, uniting professionals from across Essex who are dedicated to addressing domestic abuse. This year's event focused on the important and often overlooked connection between domestic abuse and suicide.

The timing of our conference leads into the United Nations 16 Days of Activism Against Gender-based Violence, a global movement to end violence against women and girls. There were attendees from agencies such as substance misuse, probation, police, housing, children and adults social care, and health.

Attendees heard from expert speakers who have worked hard to bring visibility to this issue. Speakers included Phyllis Daly, who shared of her family's desperate attempts to protect her daughter, Jessie Laverack, before she was found dead in 2018. Jessie tragically lost her life due to domestic abuse and Phyllis fought for an Article Two inquest. The coroner recognised that Jessie's mental illness stemmed from domestic abuse, linking it to her suicide.

Luke Appleyard shared his personal experience of domestic abuse as a child at the hands of his birth father and the impact it continues to have on him as an adult today.

Sarah Danger, a doctoral researcher from the University of London, presented national data suggesting that up to one-third of female suicides in England and Wales may be connected to domestic abuse.

Our annual conference provides an opportunity to bring people together to build connections and strengthen partnership working, increasing our response to domestic abuse along with driving change.



Michelle Williams – Senior Domestic Abuse Partnership Officer, SETDAB



Jane Gardner – SETDAB Chair and Deputy Police, Fire and Crime Commissioner, PFCC

Nicky O'Shaughnessy – SETDAB Vice Chair and Director of Local Delivery, Essex County Council

Alison Gilmour – Head of Domestic Abuse Partnerships, SETDAB

Post-conference 100% of attendees have knowledge and understanding of the best practices for identifying and addressing risks of domestic abuse and suicide.

With 19% having excellent knowledge and understanding, and 71% having good knowledge.



Really enjoyed the day and the guest speakers. Always gives you pause for thought, even though we have been doing this job for decades. Look forward to next years.

Attendee



It is together that we are going to make the greatest difference.

Nicky O'Shaughnessy
– SETDAB Vice Chair
and Director of Local Delivery,
Essex County Council



The conference was by far the best I have been to for years, really informative and well balanced with lived experience.

Attendee

Outcome 5 Lead



Ian Tompkins - Programme Director for Levelling Up and Partnership, Hertfordshire & West Essex ICB

Good communication is essential in raising awareness of domestic abuse and its impact on people's lives, also in helping prevent it. It is equally important in promoting the support available, not just to victims but perpetrators too. A key mission of our communications effort is to give people confidence to come forward, speak up and seek help. That is what members of this group are determined to keep doing, and I am proud to be one of them.

Domestic Abuse Related Death Reviews (DARRDs)

Learning the lessons



Recruitment exercise to renew our pool of DARRD chairs, expanding on areas of expertise.



Community Safety Partnerships (CSPs) were asked if they wanted SETDAB to continue leading this workstream, to which they unanimously agreed.



4 new DARRDs have been commissioned for 2024/25 alongside our ongoing reviews, and 4 reviews were completed/published.



Following our conference, a joint SETDAB and SET Suicide Prevention Board meeting took place to discuss collaboration on this agenda and establish joint workstreams.



Work commenced on developing our next Thematic Review to highlight learning from recently published DARRDs.

The learning identified is used to inform the work of SETDAB.



Work was completed to identify emerging themes from Suspected Victim Suicide reviews to feed into our SETDAB conference.



SETDAB continue to participate in a Local Oversight Pilot with the Domestic Abuse Commissioners Office focused on the implementation of recommendations, actions and sharing of learning on completed DARRDs.

Find out more about our [published reviews](#).

Our Priorities for the Coming Year

- Priority 1

Support our partners to monitor the delivery of our newly commissioned domestic abuse services across SET.
- Priority 2

Deliver our next SETDAB domestic abuse strategy.
- Priority 3

Working with our partners to identify key themes to inform the development and delivery of high-quality learning events.
- Priority 4

Release domestic abuse communication and campaign activities across the year to continue to raise awareness of domestic abuse and pathways into services.
- Priority 5

Continue to work with the Domestic Abuse Commissioner to consider learning from the domestic homicide review oversight pilot.
- Priority 6

Share the domestic abuse perpetrator projects research we have commissioned to enhance knowledge about approaches that work.
- Priority 7

Share the DARDR Thematic Review with our partners to cascade learning.
- Priority 8

Develop and deliver our partnership pilot project which aims to improve victim-survivor housing options and choice through the development of perpetrator housing pathways.

Glossary

CIC – Community Interest Company

CSC - Children’s Social Care

CSP - Community Safety Partnerships

DA - Domestic Abuse

DARDR – Domestic Abuse Related Death Review

ESIP – Essex Stalking Intervention Panel

FGM – Female Genital Mutilation

ICB – Integrated Care Board

IDVA – Independent Domestic Violence Advisor

Impressions – number of times social media post features on a user’s feed/ timeline

ISVA – Independent Sexual Abuse Advisor

LGBTQ+ – Lesbian, Gay, Bisexual, Transgender, Questioning

Lived Experience – first-hand, personal knowledge and understanding from experiencing domestic abuse

MARAC – Multi-Agency Risk Assessment Conference

PEDACC – Pan Essex Domestic Abuse Commissioning Collaborative

PFCC – Police, Fire and Crime Commissioner

Reactions – interacted with social media post

SET – Southend, Essex, and Thurrock

SETDAB – Southend, Essex, and Thurrock Domestic Abuse Board

Not sure where to go if you or **someone you know** is experiencing domestic abuse?

COMPASS

Call COMPASS for confidential help, support and advice

Essex Domestic Abuse Helpline
0330 333 7 444

Supporting all of Essex

Working with local services to get you the right support

Self-referral

Professional referrals

Support provided for anyone over the age of 16 in Essex

Call us
0330 333 7 444*
*In an emergency dial 999

Refer online at
www.essexcompass.org.uk

In partnership with:

Funded by:

Delivered by:

Essex COMPASS

COMPASS is a single point of access across Southend, Essex and Thurrock to support victims of domestic abuse and those who want to change their harmful behaviour.

Essex Domestic Abuse Helpline:
0330 333 7 444

Helpline available from
8am to 8pm weekdays
and 8am to 1pm weekends.

SETDAB

Southend, Essex
& Thurrock Domestic
Abuse Board

SETDAB Annual Report 2024 - 2025 | 34