

# Southend, Essex and Thurrock domestic abuse newsletter

#togetherwecan



## December 2018

Issued on behalf of the Southend, Essex and Thurrock Domestic Abuse Partnership

**SETDAB**

Southend, Essex  
& Thurrock Domestic  
Abuse Board

### WE HAVE A NEW CHAIR!


**Jane Gardner**  
*Deputy Police, Fire and  
Crime Commissioner*



I am extremely honoured to be the new chair of the Southend, Essex and Thurrock Domestic Abuse Board. I'm really looking forward to working with all of you to help break the cycle of domestic abuse across the county, which is one of the priorities in the Police and Crime Plan for Essex. As we move into a new year my resolution is going to be to make sure that we place survivors of domestic abuse at the heart of everything we do, as well as continuing the great work we are doing with




## CHRISTMAS EDITION



**The J9 Project**

The J9 Domestic Abuse Initiative is named in memory of Janine Mundy, who was killed by her estranged husband while he was on Police bail. The initiative was started by her family and the local police in Cambourne, Cornwall, where she lived and aims to raise awareness of domestic abuse and assist victims to seek the help they so desperately need.



Telephone - Safer Places: 03301 025811 Visit our website: <https://setdab.org/j9-initiative/>

## Upcoming J9 Training

**Friday 8<sup>th</sup> February 2019**

**Harlow College (Lecture Theatre)**

**9am till 12pm**

**To Book, Email – [daisy@pah.nhs.uk](mailto:daisy@pah.nhs.uk)**



Merger of the  
J9 Newsletter with SETDAB Newsletter



Following the introduction of the General Data Protection Regulation (GDPR), that came into force in May 2018, our J9 Newsletter contact list has reduced. Therefore, we are merging both the J9 and SETDAB Newsletters from 2019.

If you have staff members or colleagues who may like to receive this publication or contribute to our newsletter please ask them to sign up to our circulation list by clicking the link below.

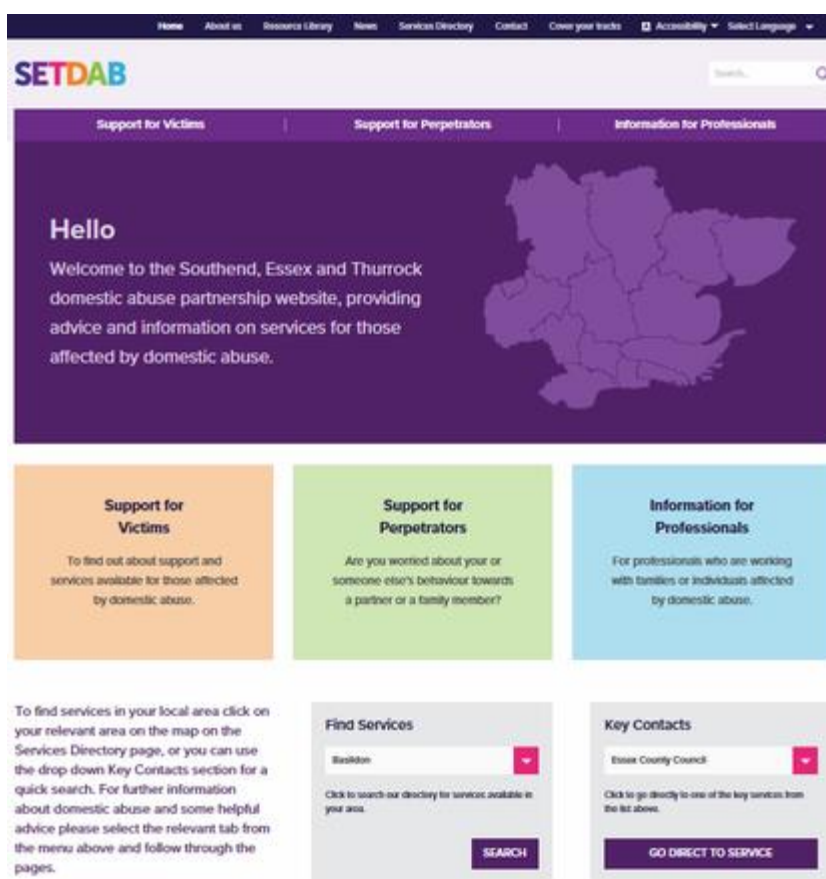
<https://setdab.org/newsletter-sign-up/>

perpetrators to change their behaviours. I'm lucky to be working from a solid legacy left by your former Chair, Cllr Dick Madden and I hope I will be able to follow in his footsteps by keeping things real and getting things done. Merry Christmas to you all and thank you for all of your hard work this year in developing and progressing this critical agenda.

## TEAM UPDATE

A new team member joined us in November as the Substance Misuse Domestic Abuse Co-ordinator. Emma has joined us from Essex Police and will be working closely with substance misuse agencies to ensure domestic abuse is being addressed by everyone across the partnership.

## SET DA Website launch



The link to our Southend, Essex and Thurrock Domestic Abuse partnership website can be found below. The website provides advice and information on services for those affected by domestic abuse. Any feedback is welcomed. Please note you are able to submit comments via the 'contact' page appearing on the website.

<https://setdab.org/>

---

## SETDAB Conference

28th November 2018

As part of the #16daysofaction we held our annual conference, which focused on working with perpetrators of domestic abuse.

*"Very good and informative day with lots of useful information. Guest speakers were brilliant and personal stories emphasised the importance of domestic violence awareness."*

*"Emotive and thought-provoking with sound, up to date information including theories and research."*

*"Wow! I thoroughly enjoyed the whole day. Wearing my J9 badge. Thank you so much, well done on a fantastic conference."*



**Prior to the conference, 59% of attendees were not confident in knowing what perpetrator services are available across Southend, Essex and Thurrock. By the end of the conference, 100% of attendees felt confident or very confident in their knowledge.**

All resources and information from the conference will be uploaded to the SETDAB website by Monday 17th December 2018.

---

## **Refuge Christmas Campaign**

This Christmas, Refuge, in partnership with McCann Bristol, have released a collection of poems, which when read in reverse demonstrate the challenges and dangers of the festive period for victims of domestic abuse.

## CHRISTMAS EVE

Mum's laid out  
our best white tablecloth  
A splash of warm claret infuses  
Dad's traditional punch  
Then, on cue...  
Mum starts humming 'Silent Night'  
As she unpacks crackers  
to snap with us  
We wait for Father  
Christmas

*(text read from bottom to top)*

If your partner turns on you, turn to us. [refuge.org.uk](http://refuge.org.uk)



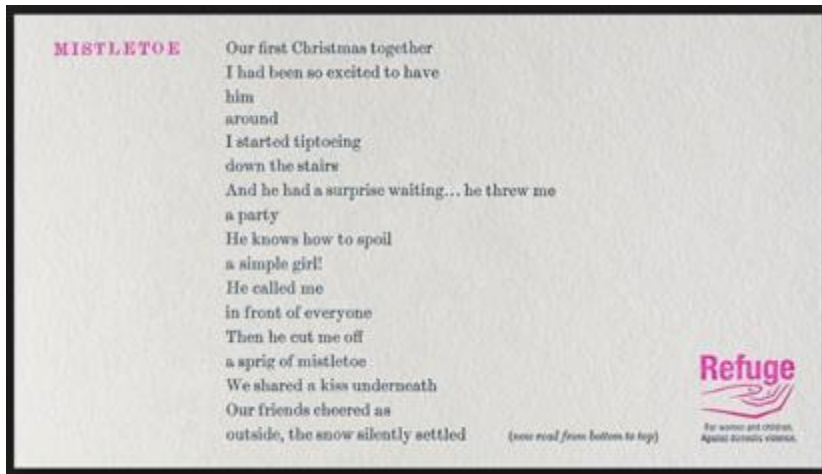
## AULD LANG SYNE

5...  
4...  
3...  
2...  
1...  
willing each second to pass  
My eyes stay fixed on the clock  
hand  
He raises his  
glass  
Then... an explosion of  
shrieking and yelling  
He presses closer  
into me  
After 'Auld Lang Syne', he launches  
fireworks  
It's the start of our  
New Year

*(text read from bottom to top)*

If your partner turns on you, turn to us. [refuge.org.uk](http://refuge.org.uk)





Even now in 2018, one in four women experience domestic violence in their lifetime. Two women a week are killed at the hands of a partner or ex-partner in England and Wales. And on average, another three women a week commit suicide as a way of escape.

To raise awareness of this growing epidemic, which is often overlooked during the festive season, Refuge is publishing a series of three reversible poems, to emphasise the severity and pervasiveness of domestic violence at Christmas.

Read one way, the poems tell a positive story, but when read in reverse they depict the terrifying reality of living with a perpetrator of domestic violence. The campaign aims to raise awareness of the hidden, insidious nature of domestic violence, and lets victims know that, when their partner 'turns' and becomes controlling, they can turn to Refuge for the support they need to escape and rebuild their lives.

[www.refuge.org.uk](http://www.refuge.org.uk)

---

## Essex MARAC

The **Essex MARAC static hub** is still looking for practitioners that would be interested in becoming a Chair in the Multi-Agency Risk Assessment Conferences' (MARAC).

This is a great learning opportunity and is ideal for anyone looking to expand and strengthen their skillset.

For more information please contact:  
[Estelle.Pereira@essex.pnn.police.uk](mailto:Estelle.Pereira@essex.pnn.police.uk)

Back in August, it was decided MARAC meetings would be held under **daily set areas** giving all of our partner agencies the chance to attend and participate for their set areas and cases. All that will be required is that you contact [MARACESSEX@essex.pnn.police.uk](mailto:MARACESSEX@essex.pnn.police.uk) as early as possible after receiving the case list to advise you will be attending.

We would like to encourage you all as partner agencies to try and attend and give your information to help safeguard the victims we are

discussing. We do have a dial in facility but can only facilitate one agency at a time on this at the moment.

All meetings will take place here at County Hall and will be as follows;

- **Tuesdays - Basildon, Brentwood, Wickford, Castlepoint & Rochford cases**
- **Wednesdays - Colchester & Tendring**
- **Thursdays - Chelmsford, Maldon & Braintree**
- **Fridays - Harlow, Epping & Uttlesford**

We would like to thank you all in advance for your support with this important safeguarding and we welcome all practitioners from all agencies to attend and contribute to the meetings. We also welcome observers on an appointment only basis.

If you have any further questions please do not hesitate to contact [MARACESSEX@essex.pnn.police.uk](mailto:MARACESSEX@essex.pnn.police.uk)

---

## Southend MARAC

When making a referral into MARAC please include your rationale for why you think the victim is at High Risk of harm

*Definition: There are identifiable indicators of risk of serious harm. The potential event could happen at any time and the impact would be serious.*

*Risk of serious harm (Home Office, 2002 and OASYS, 2006): 'A risk which is life threatening and/or traumatic, and from which recovery, whether physical or psychological, can be expected to be difficult or impossible'.*

It is important to understand what the current risks are especially if you are using professional judgement to override the DASH score or if you have been unable to complete a DASH.

If able to complete the DASH please ensure you expand on any "yes" answers to ensure the risks are fully understood and can be considered in action planning

---

## Thank You

The Southend, Essex and Thurrock Domestic Abuse Board would like to take this opportunity to thank you for your continued support and wish you a very Merry Christmas and Happy New Year.



<https://setdab.org/>

